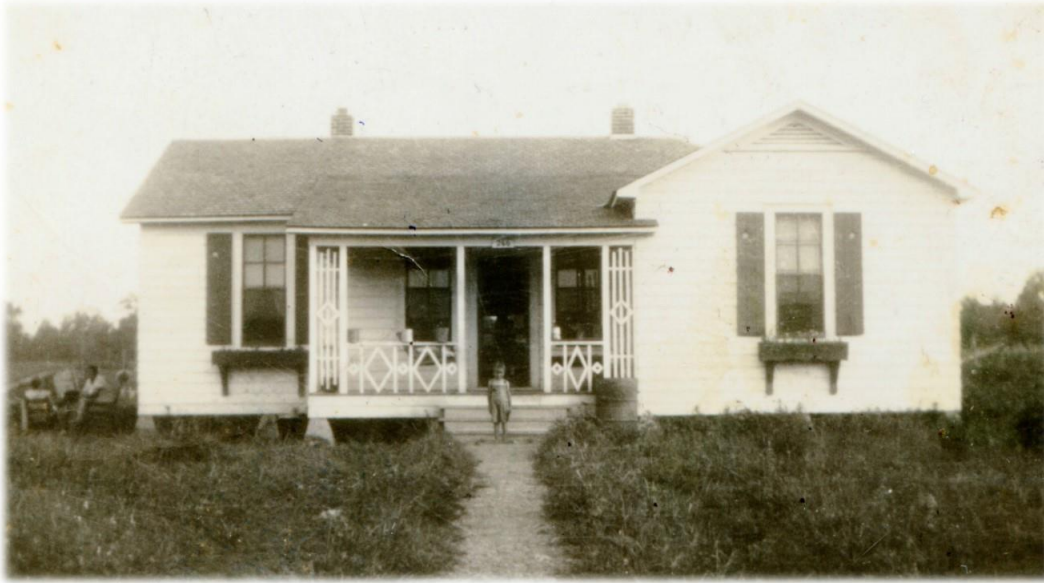


Johnny Cash Boyhood Home

Math 1.G.A, Geography G.8.1.2, History 13.1.3



Johnny Cash grew up in Dyess, Arkansas. The picture above is the house he lived in with his family. They moved there to be farmers in 1935.

1. Look at the door of the house. It makes the shape of a rectangle. What other shapes do you see on the house? Draw the different shapes you see below.

2. What are some words you would use to describe the house?

3. Does this house look the same or different than houses built now? Why or why not?